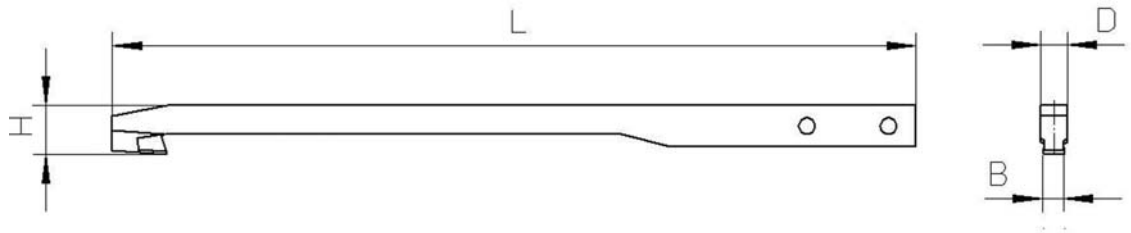


Abmessungen der FRÖMAG Standard-Nutwerkzeuge Zoll-Abmessungen



Typ	Ausrüstung	Bohrungsbereich zoll	Breite B		Dicke D	Höhe H	Länge L
			zoll	mm			
AA50	WA5	33/64 - 9/16	1/8	3,17	5	5,5	265
AA51			3/16	4,76		6,2	
AA52		5,8					
AA53		9/16 - 5/8				6,6	
AA54		5/8 - 3/4				7,4	
AA55		3/4 - 51/64	8,7				
AA61	WA6	51/64 - 7/8	3/16	4,76	10	9,5	335
AA61-250	WA6/250	7/8 - 1	1,4	6,35		12,4	435
AA62	WA6					1 - 1 1/4	5/16
AA62-250	WA6/250	13,7	435				
AA63	WA6			1 1/4 - 1 3/8		3/8	9,52
AA63-250	WA6/250	16,7	435				
AA64	WA6			1 3/8 - 1 1/2		7/16	11,11
AA64-250	WA6/250	19,5	435				
AA65	WA6			1 1/2 - 1 9/16		1/2	12,7
AA65-250	WA6/250	20	435				
AA66	WA6			1 9/16 - 1 3/4		7/16	11,11
AA66-250	WA6/250	19,5	435				
AA67	WA6			1 1/2 - 1 37/64		7/16	11,11
AA67-250	WA6/250	20	435				
AA68	WA6			1 1/2 - 1 3/4		1/2	12,7
AA68-250	WA6/250	19,5	435				
AA69	WA6			1 9/16 - 1 3/4		7/16	11,11
AA69-250	WA6/250	21	435				
AA6910	WA6			1 1/2 - 1 37/64		7/16	11,11
AA6910-250	WA6/250	20	435				
AA6911	WA6			1 1/2 - 1 3/4		1/2	12,7
AA6911-250	WA6/250	19,5	435				